



# VOLOU RESIDENCE

MODERN LIVING IN EGKOMI

Introducing Volou, a contemporary residential building located on Volou Street, in Egkomi just steps from the University of Nicosia. Comprising 11 well-designed apartments—10 one-bedroom apartments, and 1 two-bedroom apartment—Volou offers modern living spaces within walking distance of essential amenities and services. Ideal for anyone seeking convenience, comfort, and a vibrant lifestyle, Volou brings you closer to everything you need for daily life in a thriving community.



# PROJECT OVERVIEW

---

 Prime Location in Egkomi, Nicosia - near by University of Nicosia

 Modern, energy-efficient apartments

# ARCHITECTURAL & DESIGN DETAILS

---

 3 Floors

 Energy Efficiency Class A Building

 11 Apartments

 Apartment Layout Per Floor:

- One-Bedroom Apartments
- Two-Bedroom Apartments

# AMENITIES & FEATURES

---

- Nearby Shopping Areas for Convenience
- Contemporary Design Emphasizing Natural Environment
- Balconies Enhancing Outdoor Living
- Modern finishes & high-quality materials



# CONSTRUCTION & DELIVERY TIMELINE

---



**UNDER CONSTRUCTION**



**ESTIMATED COMPLETION:  
Q2 2026**

# CONTACT DETAILS

---



[www.bednmix.com](http://www.bednmix.com)



**7000 2002**



[info@bednmix.com](mailto:info@bednmix.com)



# APARTMENTS OVERVIEW

---

## APARTMENT 101

|                 |                   |
|-----------------|-------------------|
| Bedrooms        | 1                 |
| Internal Area   | 50 m <sup>2</sup> |
| Covered Veranda | 11 m <sup>2</sup> |
| Parking         | 1                 |

## APARTMENT 102

|                 |                    |
|-----------------|--------------------|
| Bedrooms        | 1                  |
| Internal Area   | 40 m <sup>2</sup>  |
| Covered Veranda | 7,3 m <sup>2</sup> |
| Parking         | 1                  |

## APARTMENT 103

|                 |                   |
|-----------------|-------------------|
| Bedrooms        | 1                 |
| Internal Area   | 50 m <sup>2</sup> |
| Covered Veranda | 10 m <sup>2</sup> |
| Parking         | 1                 |

## APARTMENT 104

|                 |                    |
|-----------------|--------------------|
| Bedrooms        | 1                  |
| Internal Area   | 50 m <sup>2</sup>  |
| Covered Veranda | 9,7 m <sup>2</sup> |
| Parking         | 1                  |

## APARTMENT 201

|                 |                   |
|-----------------|-------------------|
| Bedrooms        | 1                 |
| Internal Area   | 50 m <sup>2</sup> |
| Covered Veranda | 11 m <sup>2</sup> |
| Parking         | 1                 |

## APARTMENT 202

|                 |                    |
|-----------------|--------------------|
| Bedrooms        | 1                  |
| Internal Area   | 40 m <sup>2</sup>  |
| Covered Veranda | 7,3 m <sup>2</sup> |
| Parking         | 1                  |

## APARTMENT 203

|                 |                   |
|-----------------|-------------------|
| Bedrooms        | 1                 |
| Internal Area   | 50 m <sup>2</sup> |
| Covered Veranda | 10 m <sup>2</sup> |
| Parking         | 1                 |

## APARTMENT 204

|                 |                    |
|-----------------|--------------------|
| Bedrooms        | 1                  |
| Internal Area   | 50 m <sup>2</sup>  |
| Covered Veranda | 9,7 m <sup>2</sup> |
| Parking         | 1                  |

## APARTMENT 301

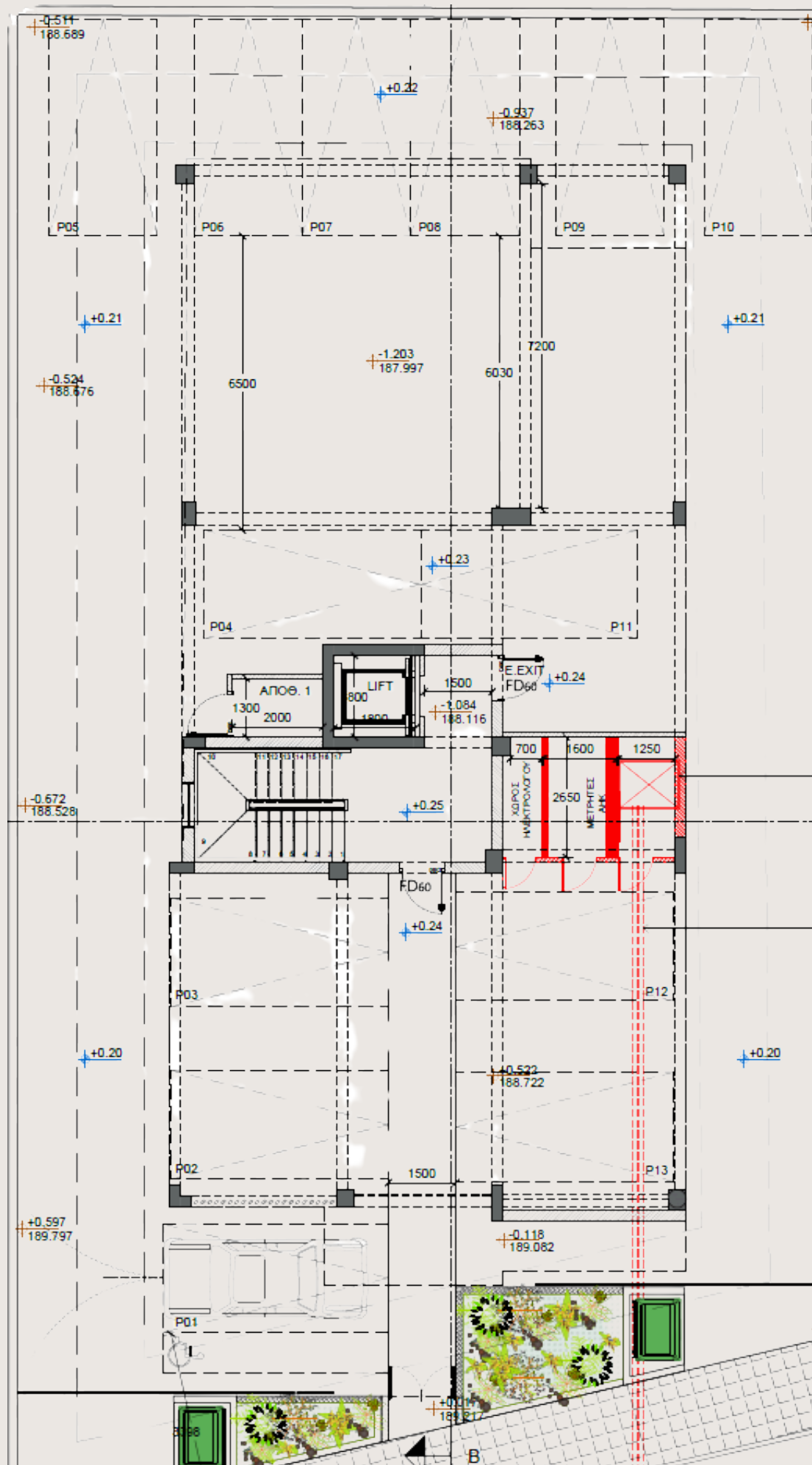
|                  |                   |
|------------------|-------------------|
| Bedrooms         | 2                 |
| Internal Area    | 82 m <sup>2</sup> |
| Covered Veranda  | 31 m <sup>2</sup> |
| Storage/ Parking | 1                 |

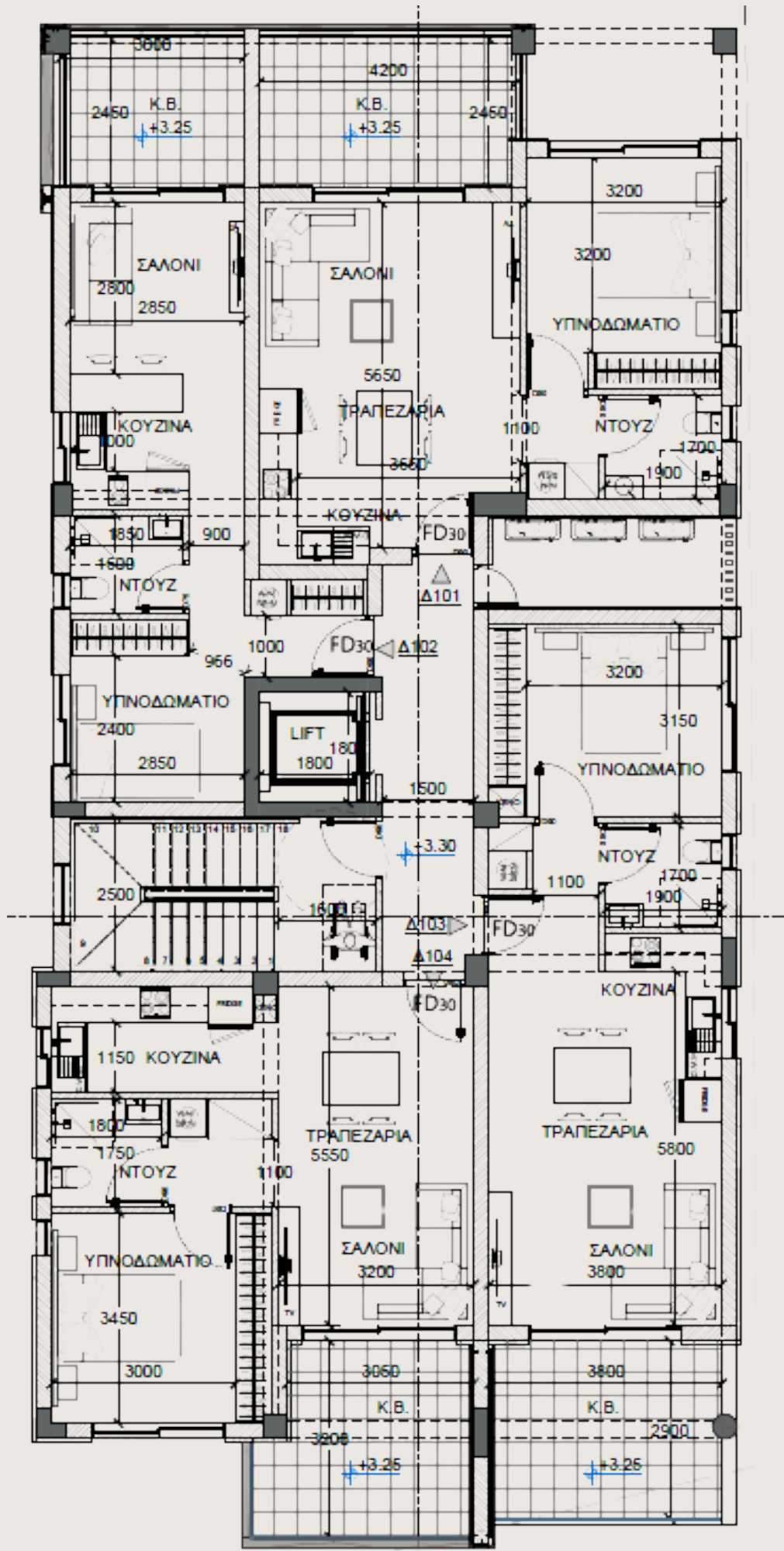
## APARTMENT 302

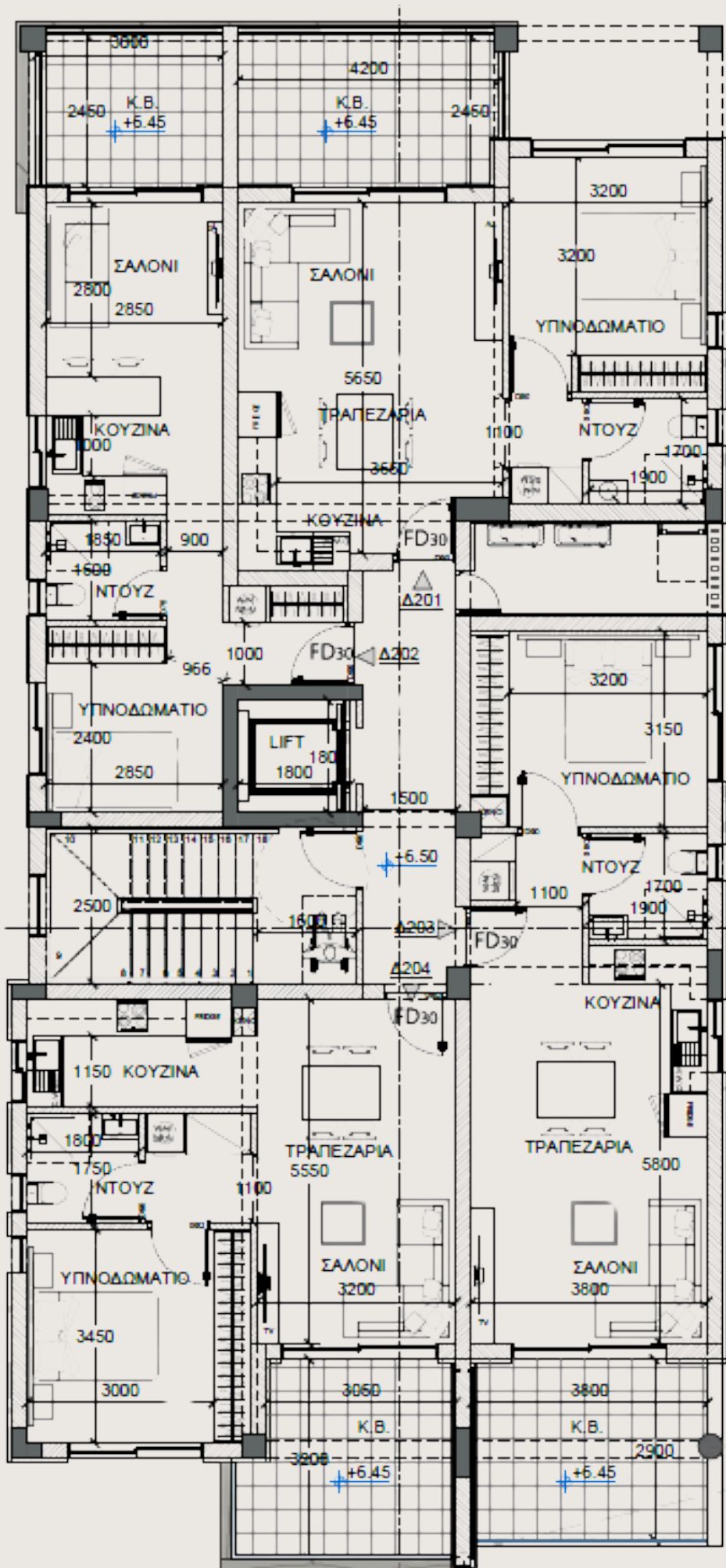
|                 |                   |
|-----------------|-------------------|
| Bedrooms        | 1                 |
| Internal Area   | 50 m <sup>2</sup> |
| Covered Veranda | 10 m <sup>2</sup> |
| Parking         | 1                 |

## APARTMENT 303

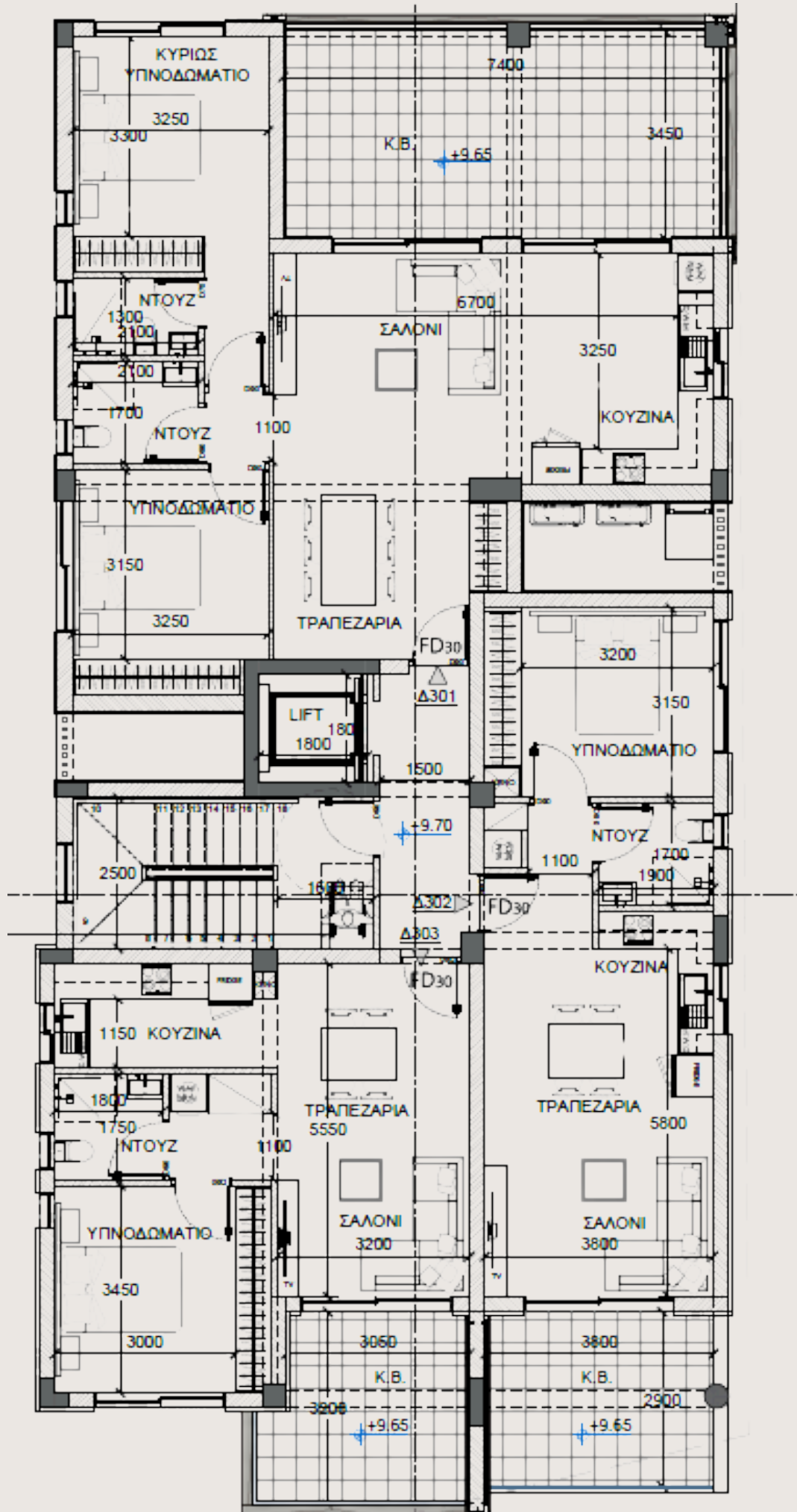
|                 |                   |
|-----------------|-------------------|
| Bedrooms        | 1                 |
| Internal Area   | 50 m <sup>2</sup> |
| Covered Veranda | 10 m <sup>2</sup> |
| Parking         | 1                 |

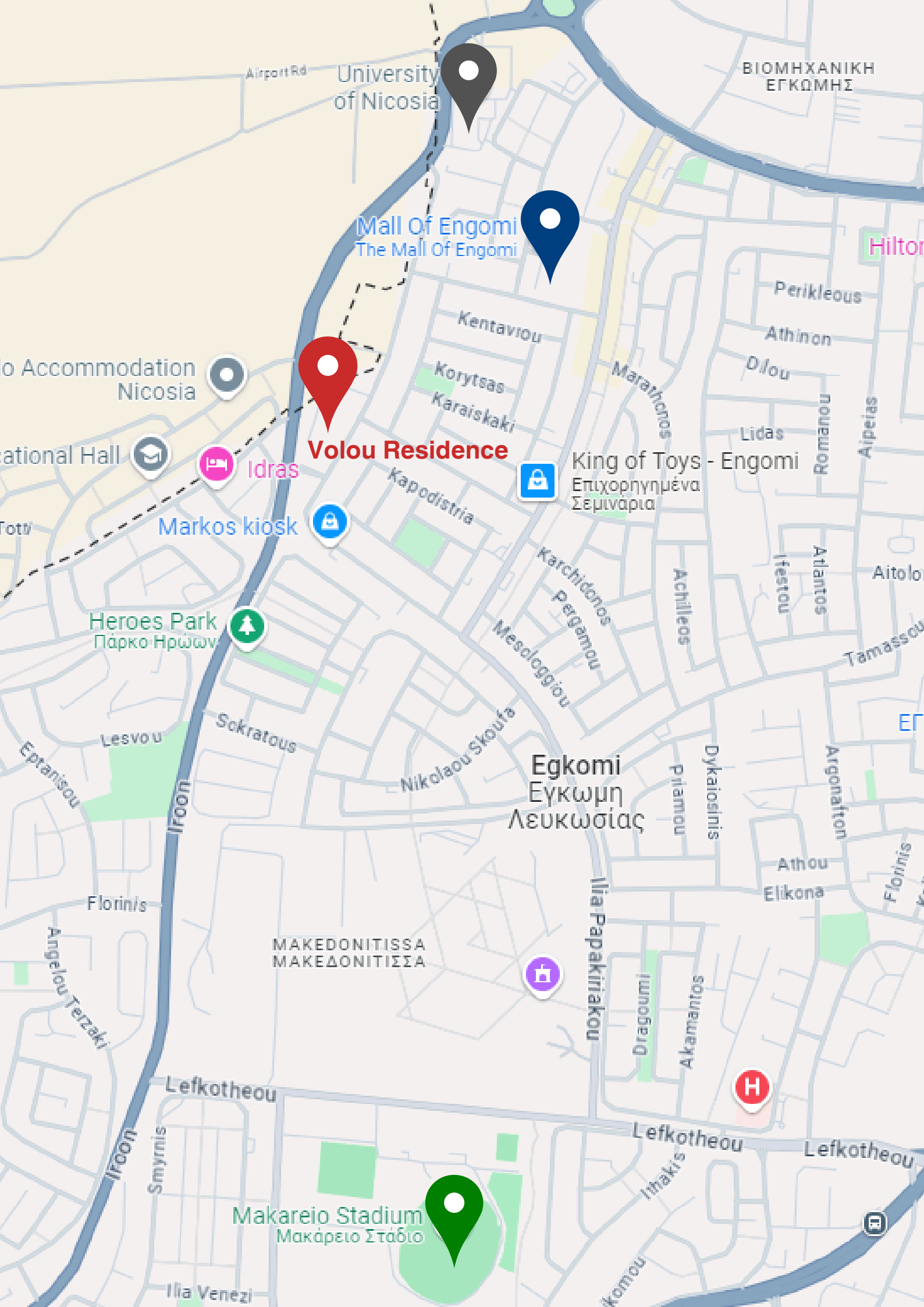












**Volou Residence**



Mall Of Engomi  
The Mall Of Engomi



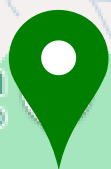
Idras



Markos kiosk



Heroes Park  
Πάρκο Ηρώων



Makareio Stadium  
Μακάρειο Στάδιο

Airport Rd

University  
of Nicosia

ΒΙΟΜΗΧΑΝΙΚΗ  
ΕΓΚΟΜΗΣ

Hilton

Perikleous

Athinon

Dilou

Kentavrou

Korytsas

Karaiskaki

Marathonos

Lidas

Romanou

Aipeias

o Accommodation  
Nicosia

ational Hall

Totti

King of Toys - Engomi

Επιχορηγημένα  
Σεμινάρια

Kapodistria



Karchidonos  
Pergamou

Achilleos

Ifestou

Atlantos

Aitolou

Tamassou

Heroes Park  
Πάρκο Ηρώων

Lesvou

Sokratous

Nikolaou Skoufa

Mesolaggiou

Egkomi  
Εγκωμη  
Λευκωσίας

Pilamou  
Dykaioisinis

Argonaton

Athou  
Elikona

Florinis

Florinis

ΜΑΚΕΔΟΝΙΤΙΣΣΑ  
ΜΑΚΕΔΟΝΙΤΙΣΣΑ



Iliia Papakiriakou

Dragoumi

Akamantos



Lefkotheou

Lefkotheou

Lefkotheou

Smyrnis

Itaki's

Makareio Stadium  
Μακάρειο Στάδιο

Iliia Venezi

Komou

